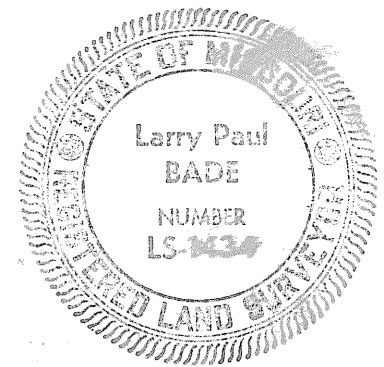


"Dogwood Lake Re-subdivision of Lots 291 & 292"
 Section 4, Township 46 North, Range 2 West, Warren County, Mo.



THIS IS TO CERTIFY that I, LARRY P. BADE, have made a survey and re-subdivision of a tract of land being all of Lots 291 and 292 of DOGWOOD LAKE, PLAT 9; being part of Lot 1 of the Northwest Quarter of Section 4, Township 46 North, Range 2 West, Warren County, Missouri.

The results of said survey and re-subdivision are hereon correctly shown.

By: Larry P. Bade
 Larry P. Bade
 R.L.S. No. 1434

NATIONAL RESORTS, INC., the undersigned owner of the tract of land platted and described in the above Surveyor's Certificate has caused the same to be surveyed and re-subdivided in the manner shown on this plat; which re-subdivision shall hereafter be known as "DOGWOOD LAKE, RE-SUBDIVISION OF LOTS 291 and 292".

This plat is subject to conditions, restrictions, easements, covenants, and appurtenances filed with the Recorder of Deeds for Warren County, Missouri.

IN WITNESS WHEREOF, the said National Resorts, Inc., has caused these presents to be signed by its President, this 25th day of July, 1985.

NATIONAL RESORTS, INC.
 By: Robert L. Lewis
 Robert L. Lewis, President

STATE OF MISSOURI) S.S.
 COUNTY OF WARREN)

On this 25th day of July, 1985, before me appeared ROBERT L. LEWIS, to me personally known, who being duly sworn, did say that he is President of National Resorts, Inc., a Missouri Corporation, and acknowledged the foregoing instrument to be the free act and deed of said Corporation.

IN TESTIMONY WHEREOF, I have hereunto set my hand and affixed my Notarial Seal, the day and year first above written.

My Commission Expires: August 12, 1987 By: Mary E. Frye
 Mary E. Frye, Notary Public

STATE OF MISSOURI) S.S. In the Recorder's Office
 COUNTY OF WARREN)

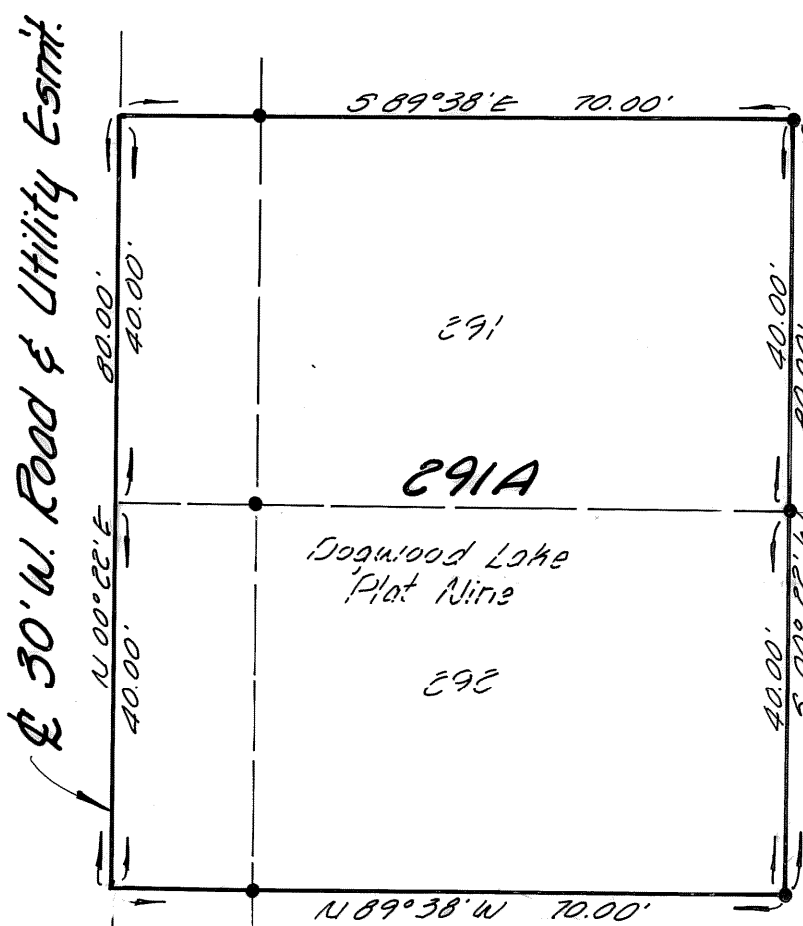
I, the undersigned, Clerk of Circuit Court, and ex-officio Recorder for said County, certify that the foregoing instrument of writing was, on the 25th day of July, 1985, at 2 o'clock 45 minutes P.M., duly filed in this office for record; and the same is truly recorded in the records of this office in Plat Cabinet B, Slide B-22.

WITNESS MY HAND and official seal, this 25th day of July, 1985.

By: Bob A. Stuttmann
 DEPUTY RECORDER

Camryn M. Fair
 EX-OFFICIO RECORDER

Scale: 1"=20'



NOTES:

- 1.) Iron Rods are set on all back lot corners and on 15' offsets along the lot lines at the front corner, unless otherwise noted.
- 2.) All Utility Easements along the side and back lot lines (marked by dashed lines) are to be five (5) feet wide on each lot, unless otherwise noted.
- 3.) All park areas are also Utility Easements.

• Denotes set 1. Rods.
 1. Rods are set 15' back from road centerline.